

# STORCOOR

## PRODUCTS & SERVICES BROCHURE

WHERE STORAGE NEEDS MEET INNOVATION SOLUTIONS

**SHELVING**



**NEW & USED  
MATERIAL  
AVAILABLE**

**RACKING**



**MEZZANINE**



**NEW GARAGE  
OVERHEAD  
STORAGE  
SOLUTION**



**CONTACT US TODAY FOR A FREE  
STORAGE SOLUTION CONSULTATION**

[WWW.STORCOOR.COM](http://WWW.STORCOOR.COM)

[info@storcoor.com](mailto:info@storcoor.com)

848 Sussex Blvd, Broomall, PA 19008

610-328-7666 800-436-7760







## ABOUT US

Storage Coordinators Broomall, PA Headquarters

Founded in 1990, Storage Coordinators (**STORCOOR**) is a family-owned and operated business that has become a recognized leader in providing storage solutions for commercial and industrial use. **STORCOOR** has been designing warehouses nationwide with all types of shelving systems, racking systems, mezzanine systems, mobile systems, and much more nationwide for over 30 years. We specialize in maximizing storage space through our turnkey approach from design to installation. We provide our customers with the end-to-end support they need to implement innovative storage solutions without the hassle or additional cost. We have been consistently providing the highest-grade storage systems and services. We design warehouses utilizing new & used pallet rack, shelving systems (Steel shelving, Boltless shelving, L&T/4-Post Shelving) high density mobile storage systems, modular offices, mezzanine systems, and similar storage products.

**STORCOOR** is proud of our excellent track record of customer satisfaction and our customer service is unrivaled in the industry with our focus on total customer commitment. Additionally, we provide top-tier services that include installation, relocation, dismantling, and warehouse design consultations. We excel at designing storage systems for various applications with regard to product flow and handling equipment. We have engineers and CAD designers in-house to assure maximum efficiency and storage capacity for your facility. Our own best-in-class crews design, install, move, and knock down all types of storage products and warehouses.

For fast delivery, we conveniently stock many of our products in our Delaware County, Pennsylvania warehouse for our customers. No matter where you're located in the Northeast – we're just a short distance away! Though we will travel anywhere nationwide where our services are requested. Whatever the situation, whatever the requirement, Storage Coordinators is ready to design a storage solution that fits your needs, keeps your team organized, efficient and highly productive.

### OUR EXPERT TEAM PROVIDES:

- Storage Consultation and Strategy
- Storage Installation
- Warehouse Moving & Relocation
- Warehouse Teardown/Warehouse Liquidation Services
- High-Density Mobile Storage Systems
- Demolition projects
- New and used storage product sales

CHOOSE A PROFESSIONAL TEAM YOU CAN TRUST – GET MORE WITH **STORCOOR**.



## PRODUCTS

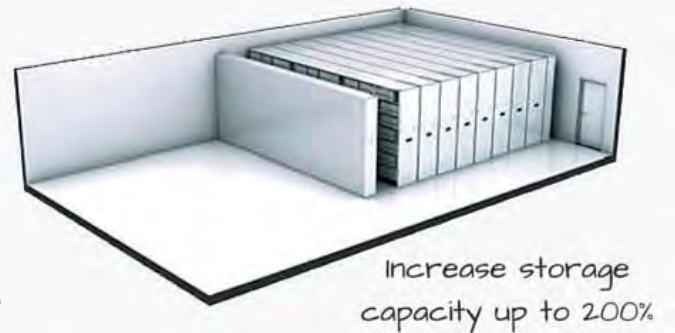
WE PROVIDE DIVERSE COLLECTIONS OF PRODUCT LINES FROM BASIC SHELVING TO COMPLEX RACKING SYSTEMS, HIGH DENSITY MOBILE SYSTEMS, AND SIMILAR MATERIAL HANDLING EQUIPMENT.

### MATERIAL STORAGE

- ROLL FORMED & STRUCTURAL PALLET RACKING
- PUSH BACK RACKING
- DRIVE-IN/DRIVE-THRU RACK SYSTEMS
- CANTILEVER RACK
- PALLET FLOW SYSTEMS
- CARTON FLOW SYSTEMS
- MEZZANINES & PLATFORMS
- HIGH BAY BIN SHELVING
- MODULAR OFFICES
- WINE SHELVING/GARAGE SHELVING
- HIGH DENSITY MOBILE STORAGE SYSTEMS
- RIVET STYLE SHELVING
- CLIP STYLE SHELVING
- & MORE!







## HIGH DENSITY MOBILE SYSTEMS

### WHAT ARE HIGH-DENSITY MOBILE SYSTEMS?

In one sentence: It's a way to store much more in less space. High-Density Mobile Storage differs from traditional "static" storage because with traditional storage, it takes up a **fixed amount of space** no matter the application. Take a look around your current space... is it full of fixed filing cabinets and bookshelves? Is it highly unorganized and overcrowded? Do you feel you need more storage space? That's where **STORCOOR** comes in to help with over 30 years optimizing the storage spaces for Fortune 500 companies down to local small businesses.

There are many different markets and applications for high-density mobile systems: whether it's the back-of-house in a retail store stockroom, a library that needs the optimal storage solution, athletic equipment room storage, warehouse storage, healthcare storage, or a law firm that needs more space for file storage. High-density mobile storage can provide many unseen benefits that can ultimately improve the bottom line for a business by increasing productivity and eliminating safety hazards for employees. By eliminating the disorganization and clutter that is plaguing your space, you'll be surprised at just how many problems implementing high-density mobile shelving can solve.

**Our High Density Mobile Storage Systems allow you to store the same amount of stuff in just half the footprint of traditional static storage.** This enables you to use the other half of your space that's now freed up towards more productive uses to help your business grow. If you don't have the money to expand your storage space, high-density mobile shelving systems are one of the simplest and most cost-effective storage solutions and the applications are endless.

Our high-density mobile storage systems can also be configured to accommodate virtually any type of shelving, even if it's a product from another manufacturer. We provide multiple system types:

- **MANUAL MOBILE SYSTEMS**
- **MECHANICAL-ASSIST MOBILE SYSTEMS**
- **POWERED MOBILE SYSTEMS (ELECTRIC)**



## RIVET STYLE SHELVING

AN ECONOMICAL STORAGE SYSTEM THAT PROVIDES EXCEPTIONAL VALUE AND VERSATILITY. APPLICATIONS RANGE FROM LIGHT TO HEAVY DUTY. RIVET STYLE FEATURES:

- No Hardware (Reduces installation costs 30-40%)
- Unobstructed shelf access from all four sides.
- Wide span opening for large parts.
- Shelves adjustable at 1 1/2" increments.



Rivet Style Boltless Shelving has become the shelving of choice for so many applications. At one time, it was used predominantly for bulk and archive storage. Now, RiveTier shelving is used in retail, closets, garages, offices, and warehouses of all sizes. **The components of Rivet Style Shelving are all boltless**, and units can be assembled with a mallet – reducing installation costs by 30% – 40%. It can also be used in seismic conditions without adding any additional bracing.

### Key features of Rivet Style Shelving

Simple Assembly – No additional hardware needed  
 Structural Integrity – 14 gauge & 16 gauge steel components  
 4 side access to stored items with open style shelving units  
 4 types of beams available that will handle virtually any storage need (from a 12" x 12" shelf to a 48" x 96" shelf)  
 Decking Options: Particle Board, Melamine and Wire Decking







**L&T SHELVING**

**THE MOST COST-EFFICIENT STATIONARY STORAGE SYSTEM FOR RECORDS AND FILE STORAGE RETRIEVAL**

- *Unique design of L&T provides up to 3X the storage capacity vs. conventional filing cabinet systems.*

L & T Shelving is the #1 alternative to conventional drawer file storage. Ideal for archive storage applications where a more luxurious feel to the space is desired. Vertical file storage **increases storage capacity by up to 60%** compared with conventional filing equipment, but also makes files more accessible. The available custom wood fascia gives this shelving an ultra premium look that we've installed in many prestigious law offices, libraries, and office spaces to date.

L&T Shelving offers the unique ability to expand as your needs change – at any time WITHOUT the need for tools. There are a wide variety of optional features and accessories such as: optional shelf supports that attach to mobile carriages, a reference shelf, dividers, and more. Easy assembly in minutes without any tools!

**SOME KEY FEATURES OF L&T SHELVING**

- Available in letter or legal depth
- Available with open or closed uprights
- Tool free construction
- Shelves are adjustable on 1 1/2" increments
- Shelf dividers are adjustable in 2" increments
- Custom Wood Fascia is available for an ultra finished look**
- Ideal for either freestanding or mobile applications

**WHY IS IT CALLED "L&T"?**

L&T Shelving gets its name from its unique construction allowing endless expansion. You add sections to an existing installation by using "T" uprights as the common center posts and finish with the "L" uprights (See photo to right)





## PALLET RACKING

PALLET RACKING IS ONE OF THE BEST SOLUTIONS FOR WAREHOUSES WHERE IT IS NECESSARY TO KEEP A WIDE VARIETY OF PRODUCTS (SKUs). THERE ARE VARIOUS RACKING SYSTEMS THAT EACH OFFERS UNIQUE BENEFITS.



### ROLL FORM PALLET RACK

The traditional warehouse storage product is a Roll Form Pallet Rack. It can be configured to meet most capacity and seismic requirements. Decking options include wood or steel front to backs and wire decking.

Rolled Form Pallet rack is the most diverse and the most popular pallet rack in the industry, it also easy to maintain. Roll form rack is most commonly manufactured in a “teardrop style”. The name comes from the teardrop-shaped holes on the columns of the uprights. The pallets rest on horizontal beams and because the clips on the teardrop arrangements can be easily moved, the shelves can be configured to different heights. This is what allows roll form rack to meet most capacity requirements that gives it such versatility and selectivity.

#### Advantages of Roll Form Pallet Rack

- Easy to Assemble. Offers a universal system for direct access to each pallet
- Adaptable to the volume, weight, and size of many different products making it ideal for warehouses storing products with various sizes. Teardrop style is interchangeable amongst manufacturers.
- Rolled Form Pallet Racking is cost-effective and is less expensive to buy and install.



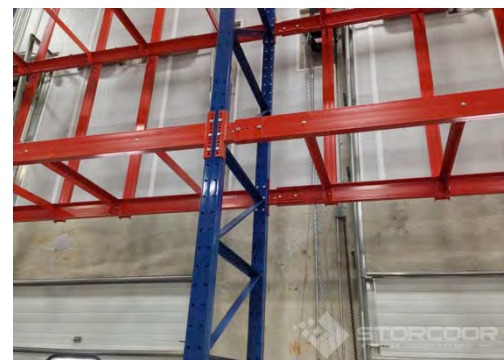
### STRUCTURAL PALLET RACK

When capacities exceed the capabilities of Roll Form Pallet Racks, Structural Pallet Racks are an alternative. Frames are made with 3” 4” or 5” channels and are reinforced with structural bracing. Structural frame capacity can reach 56,000 lbs., while beam capacities can rate as highly as 20,000 lbs. per pair.

Structural Pallet Rack are used in predominately high-traffic areas and can take more abuse than roll formed racks. Structural racks are also used in tight quarters, such as coolers and freezers.

#### Advantages of Structural Pallet Rack

- Made of structural steel with reinforced channels and feature thicker columns.
- It can withstand far greater force of impact than rolled steel in the event of an accidental collision. Structural pallet racks are designed to prevent damage from forklifts as they feature a much sturdier construction. They are bolted together and welded with AWS-certified standards.
- Extremely durable & high-strength for increased rack capacity and long lasting performance.
- Versatile – Can offer a wide range of different designs and varying load capacities.
- Structural Pallet Rack can also be incorporated into the structure of the storage facility itself so the uprights are simultaneously used to support the roof of the building itself in place of the building’s vertical support beams.







## PUSHBACK RACK & DRIVE-IN RACK

FOR THOSE WHO NEED HIGHER-DENSITY STORAGE IN THEIR WAREHOUSE OR DISTRIBUTION CENTER. PUSHBACK AND DRIVE-IN RACK CAN ACHIEVE 2X THE STORAGE CAPACITY OF STANDARD RACKING.

### PUSHBACK PALLET RACK

Push Back Pallet Rack Systems are available in either Roll Form or Structural Pallet Rack configurations depending on capacities or preference of the customer. Push Back Pallet Rack Systems are considered last-in/first-out systems (LIFO).



A Roll Form Push Back Pallet Rack Systems may feature skate wheels that divide the beams into product lanes. When a pallet is loaded onto the beam, it pushes an existing pallet back. When a pallet is removed, the pallet(s) behind it roll forward.

A Structural Pallet Rack Push Back System may feature nested carts, which sit at the front of the beams. When a pallet is loaded, an existing pallet and cart will be pushed back with the newly-loaded pallet resting on the cart

that was nested below the first.

#### Advantages of Push Back Pallet Rack:

- The ability to offer both selectivity AND high-density storage – these characteristics have made push back rack grow in popularity in recent years.
- Offers much better use of existing pallet storage space than most storage systems – *push back can offer up to 90% more storage space* compared to standard selective rack.
- Allows storage for a greater number of SKUs
- Each lane is LIFO (last in, first out), but FIFO (first in, first out) can easily be achieved with the proper design
- Because forklifts never have to enter the push back rack system, this helps prevent rack damage to the uprights
- The single-aisle design allows for much more storage rack area!
- Push back rack requires little to no maintenance

### DRIVE-IN/DRIVE-THRU PALLET RACK

*Drive-In racking systems typically utilize a LIFO inventory system. Drive-Thru Rack Systems load from one side and unload from the other for FIFO inventory retrieval. Both terms are often used interchangeably.*

Drive-In Pallet Racks are another high-density solution. A forklift drives into the system and deposits pallets on rails that run the depth of the system. This Drive-In Pallet Rack System is ideal for storing SKUs or pallets of similar sizes. A Structural Pallet Rack is required due to the nature of the system and the close proximity of fork lifts to the frames.

While standard selective pallet rack is an excellent solution for many warehouses, if your warehouse has large volumes of like-product with a large number of pallets – drive in rack may be the most ideal storage solution for you.

#### Advantages of Drive In Rack

- Allows for higher density storage vs. traditional multi-aisle selective rack systems. Drive In Rack Systems can take up to 80% less space compared to a selective rack system while still providing the same amount of storage space.
- Last in, first out (LIFO) inventory retrieval system.
- Eliminates the need for numerous aisles.
- Favors high-density storage rather than selectivity of selective pallet rack.
- Decreased storage and retrieval time which results in increased efficiency in workers.
- Cost effective solution.







## MEZZANINES

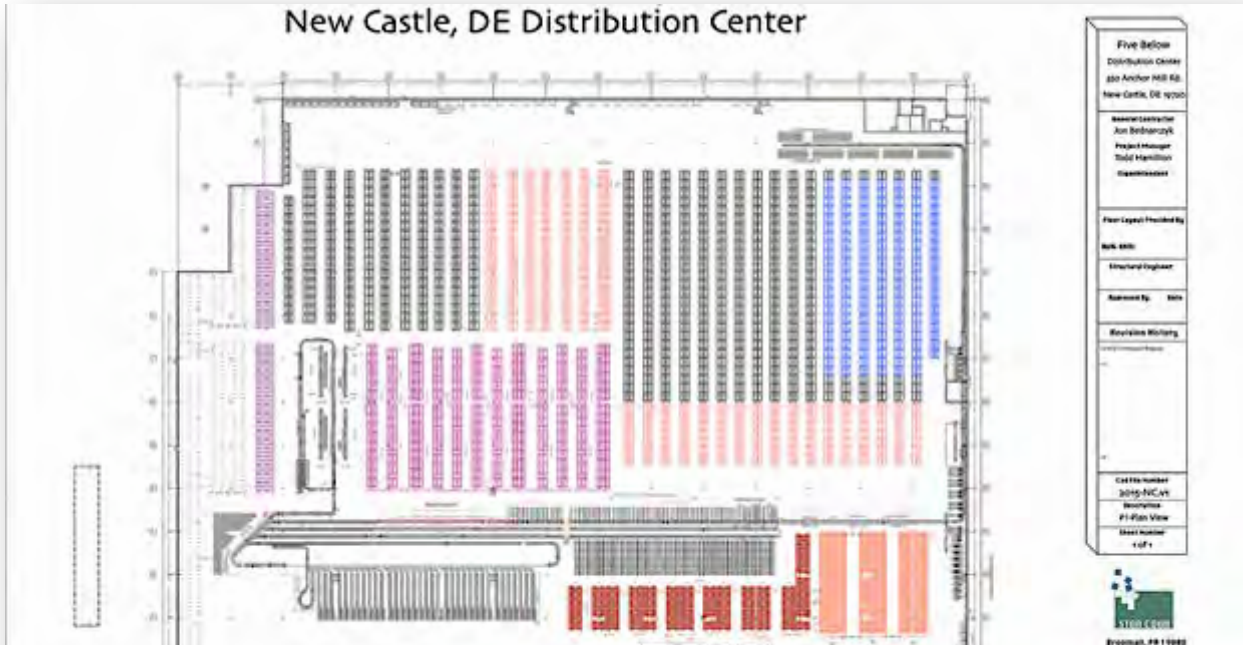
MEZZANINES ARE A COST-EFFECTIVE WAY TO ALLOW YOU TO INCREASE STORAGE CAPACITY BY TURNING EMPTY OVERHEAD SPACE INTO USABLE AREAS FOR STORAGE AND MANUFACTURING.

**M**ezzanine Systems are one of the best solutions to expanding existing floor space without the need for expensive leases, acquiring costly property or land acquisition, or delays in construction. Mezzanines provide the complete utilization of both floor-level and platform-level space and convert wasted vertical space into productive work environments. Mezzanine built systems can be designed to accommodate virtually any space requirement.

Add more space at just a fraction of new construction costs by utilizing the vertical space in your facility. Ideal for modular offices, in-plant offices, storage facilities, and more. Below you'll see the different types of mezzanine systems we've designed and installed including Shelving Mezzanine Systems, Rack-Supported Mezzanine Systems, and Clear Span Mezzanine Systems. Storage Coordinators has the experience and ability to design industrial-strength mezzanine around the existing layout of your current facility – so you don't have to incur the costs of moving into a new facility or renovations. **Storage Coordinators designs multiple mezzanine system types:**

- **RACK-SUPPORTED MEZZANINES** – Very efficient. Use them to create a 2<sup>nd</sup> floor while simultaneously holding the customer's product! An effective way to create additional storage space using existing pallet rack.
- **SHELVING MEZZANINES** – Get 2x to 3x the storage capacity by going vertical. We've designed & installed shelving mezzanines up to 27' high.
- **CLEAR SPAN MEZZANINES** – The most versatile option for mezzanine systems. Completely self-supporting and cost-effective solution for increasing office, storage, or workspace vs. relocation or building expansion. Custom designed to suit your needs.





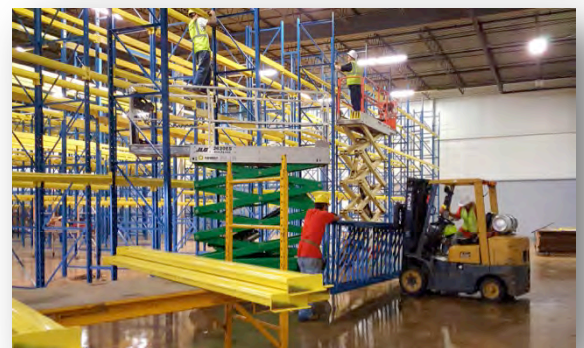
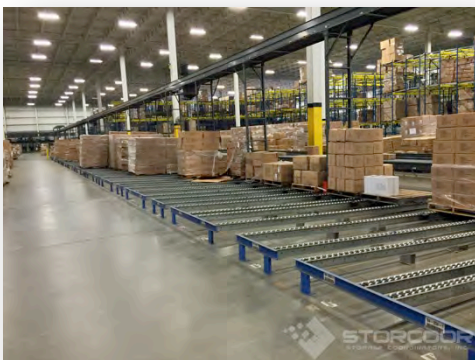
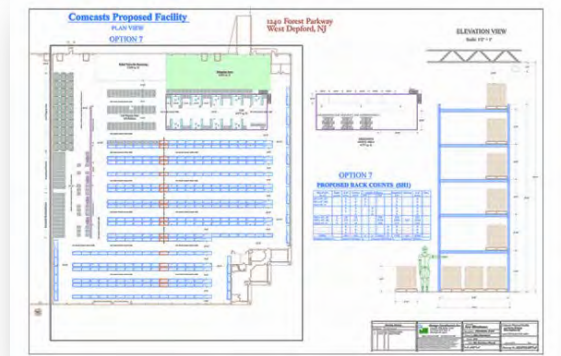
# ENGINEERING & INSTALLATION SERVICES

## ENGINEERING SERVICES

- WAREHOUSE LAYOUT & DESIGN
- RACKING & EQUIPMENT DESIGN
- ERGONOMIC WORK PLACE LAYOUTS

## INSTALLATION SERVICES

- PALLET RACK INSTALLATION & REPAIRS
- SHELVING INSTALLATION
- MEZZANINE SYSTEM INSTALLATION
- HIGH-DENSITY MOBILE SYSTEM INSTALLATION
- LOCKER INSTALLATION
- MODULAR OFFICE INSTALLATION





# THE STORCOOR ADVANTAGE

## ✓ COMPETITIVE ADVANTAGE – Turnkey Approach & Custom Solutions



We provide a turnkey approach from design to installation. This means we are a one-stop-shop for all your storage needs and we go far beyond product procurement.

We can design storage systems with a combination of new and pre-owned material according to our customers' budget. (E.g. We can design high-density mobile systems with BRAND NEW moving parts that have the industry best **10 year warranty** and then provide pre-owned shelving which ultimately saves customers money. This allows us to **1) Bid on projects which can fit our customer's budget 2) Obtain more jobs vs. competitors who go with all-new equipment only.**

## ✓ MATERIAL HANDLING EQUIPMENT INDUSTRY EXPERTS



We have an expert team with a combined 100+ years of experience in the material handling equipment and storage industries. Our team is made up of engineers, CAD designers, Project Managers, Consultants, Installers, Customer Service Reps, and Sales Representatives. Since 1990 we have been providing shelving and racking products, services and consultations. With all this experience, **we know how to design storage systems for the best price.**

## ✓ LOCALLY BASED NEAR PHILADELPHIA, PA



Storage Coordinators is a family-owned and operated business and our headquarters are conveniently located just minutes from Philadelphia. We have our own in-house installation team with our own trucks so we try to coordinate it so that when delivering equipment or performing an installation, everything we need can be placed on a truck and then driven directly to our customers. This helps prevent damage of the material and makes it easier for our customers because they don't have to worry about logistics.

## ✓ STOCKING DISTRIBUTOR – WE DEAL DIRECTLY WITH OEMS



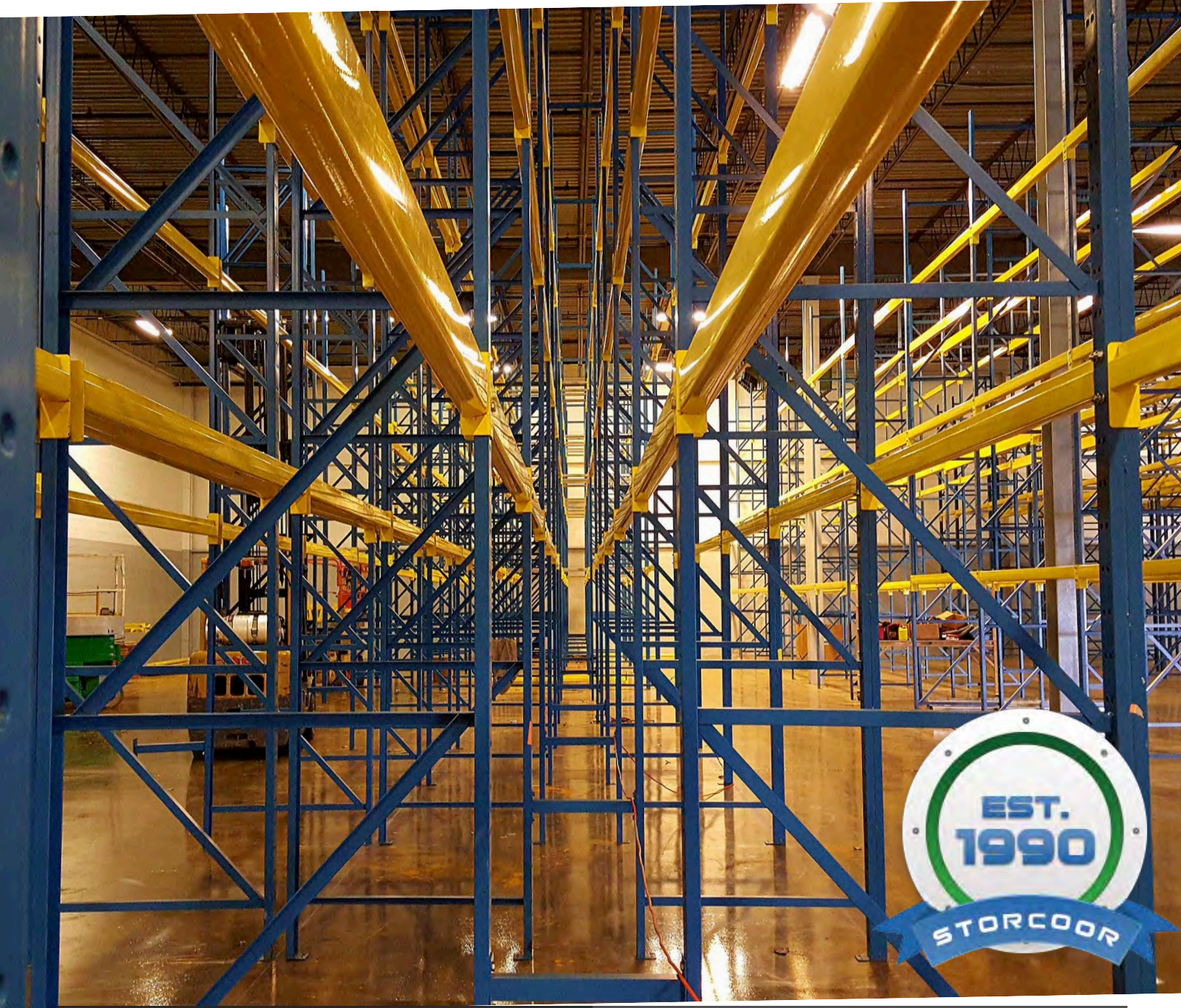
As a preferred stocking distributor for more than 20 different manufacturers – we deal directly with the OEMs and this provides us the distinct advantage by passing off the savings to our customers. We are able to get competitive pricing and provide you with custom-made turnkey solutions: something that our competition simply can't offer.

## ✓ IN-HOUSE DESIGN & INSTALL TEAMS



Other companies will outsource to subcontractors. Not us. We have our own in-house teams who are exceptionally trained in storage systems and installation. We make sure that our team members adhere to all safety standards and protocols and they produce a safe working environment. Our design team works with 2D and 3D CAD programs to design solutions.





## STORAGE COORDINATORS, INC

*LAWRENCE PARK INDUSTRIAL CENTER  
848 SUSSEX BOULEVARD  
BROOMALL, PA 19008*

WWW.STORCOOR.COM

- FOR MORE INFORMATION VISIT US ONLINE AT [STORCOOR.COM](http://STORCOOR.COM)
- TO REQUEST A QUOTE, CALL US AT (610) 328-7666 OR GO TO [STORCOOR.COM/REQUEST-QUOTE](http://STORCOOR.COM/REQUEST-QUOTE)
- FAX (610) 328-5888